

Parent/Carer Information



**DENABY MAIN
PRIMARY ACADEMY**

Astrea Academy Trust

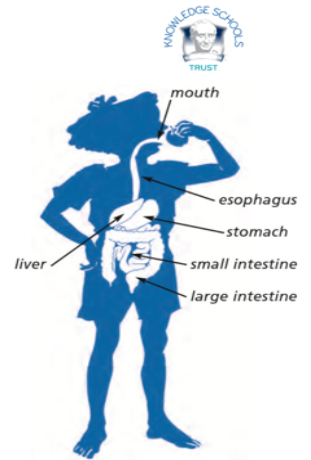
INSPIRING BEYOND MEASURE

**Year 5/6
Treasure Island
Class**

Below is a brief outline of what your child will be learning this half term.

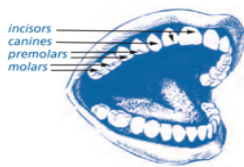
Knowledge Organiser- Science | Human Body

Key Vocabulary	Definition
digestion	The process by which food is converted into substances that can be absorbed into the body.
salivary glands	Any of three pairs of <i>glands</i> in the mouth and digestive system that secrete <i>saliva</i> for digestion
peristalsis	Movement of organ walls that propels food and liquid through the digestive system
oesophagus	The tube that leads from the mouth through the throat to the stomach.
stomach	The organ into which food passes from the oesophagus for mixing and digestion before passing to the small intestine
small intestine	The main site of the digestion of food into small molecules which are absorbed into the body.
large intestine	Takes water and some minerals from leftover food material and creates solid waste.
urethra	A tube that connects the bladder to the outside of the body
vitamins	Substances necessary for the healthy functioning of our bodies

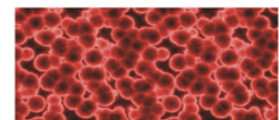
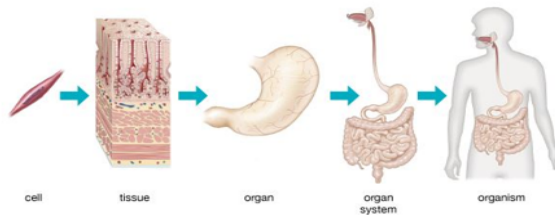


These are some of the major organs

With a very powerful microscope, you can see what some cells look like:



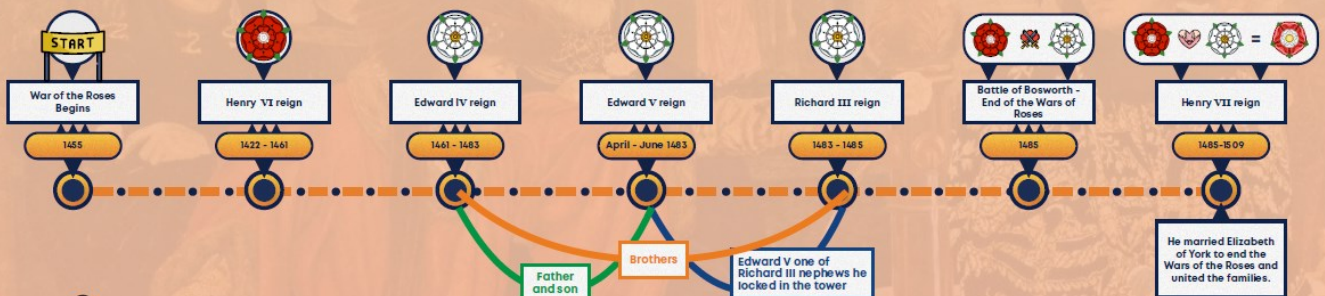
Wash your hands with soap and water, then look in a mirror and try to point to and identify your different teeth.



Human blood cells



The Wars of the Roses



Civil War	A war between people from the same country
House of York	Branch of the English royal House of Plantagenet . Three of its members became Kings of England
House of Lancaster	The other branch of the English royal House of Plantagenet .
Wars of the Roses	Civil wars for control of the throne of England. It was fought between two rival branches of the royal House of Plantagenet
Plantagenet	The name of the family which all the kings of England from 1154 to 1485 belonged to.

Plantagenet Monarchs:



Henry VI

1422 - 1461
39 year reign



Edward IV

1461 - 1483
22 year reign



Richard III

1483 - 1485
2 year reign

April - June 1483

Edward V

Just over 2 month reign



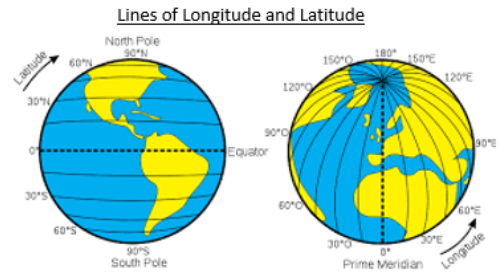
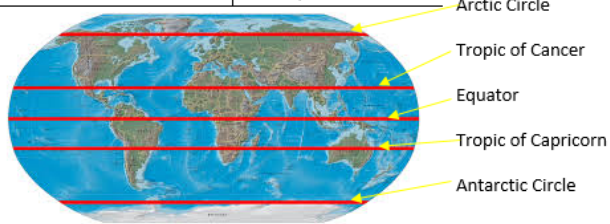
1422 - 1461

Henry VII

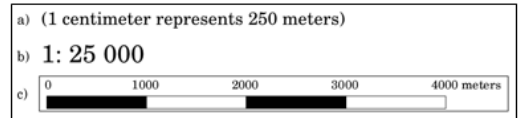
24 years reign

Knowledge Organiser- Spatial Sense (Geography)

Key Vocabulary	Definition
Lines of Latitude	Imaginary lines that help us identify how far north or south of the equator a location is.
Lines of Longitude	Imaginary lines that help us identify how far east or west of the Prime Meridian a location is.
Equator	An imaginary line that shows us the locations that are half way between the north and south pole. The Equator divides the earth into the Northern Hemisphere and the Southern Hemisphere.
Prime Meridian	The line of longitude that measures 0° and runs through Greenwich in London.
Tropic of Cancer	The most northern line of latitude where the sun can be directly overhead. Named after the constellation of Cancer.
Tropic of Capricorn	The most southern line of latitude where the sun can be directly overhead. Named after the constellation of Capricorn.
Scale	The representation of c



Map Scale



Music:

During this half term, Treasure Island will be preparing for their leaver's assembly and learning 'You've got a friend'

PSHE:

Children will follow the schools SRE lessons, looking at puberty and relationships. (more information will follow about this)

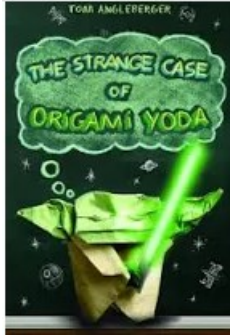
Art:

Line drawing and learning about the artist Hokusai



Literacy Tree Text

The strange Case of Ori-
gami Yoda



Extended Writing Opportunities

Instructions, Persuasive
writing, Recounts,
discussion

Maths

- Algebra
- Shapes
- Measures
- Angles
- Developing reasoning skills

This half term, we are reading:

Holes By Louis Sachar

Things to remember;

- PE day—Friday—please remember to bring PE kits in
- Leavers events— we are currently sorting this out and will be in touch shortly